

UK's first, **fully modular, rapidly deployable** CCTV tower



Delivered by British Business Bank

NPIF Funded

- Red CCTV first recipient of NPIF funding
- Designed and built in the North West
- Debuted at Rail Live 2019

Smart CCTV

- Intelligent CCTV analytics
- Detects humans and vehicles
- Eliminates animals and stray materials
- Reduces false alarms by 95%
- ANPR capture
- Intruder audible challenge

Fast, durable

- Rapid deployment - anywhere in the UK within 24 hours
- Modular system constructs in minutes
- HALO range includes Hybrid, Solo and Compact
- HALO fuel cell, wind and solar power options available



Sophisticated CPNI (**HOME OFFICE**) approved video analytics create ultimate smart CCTV system

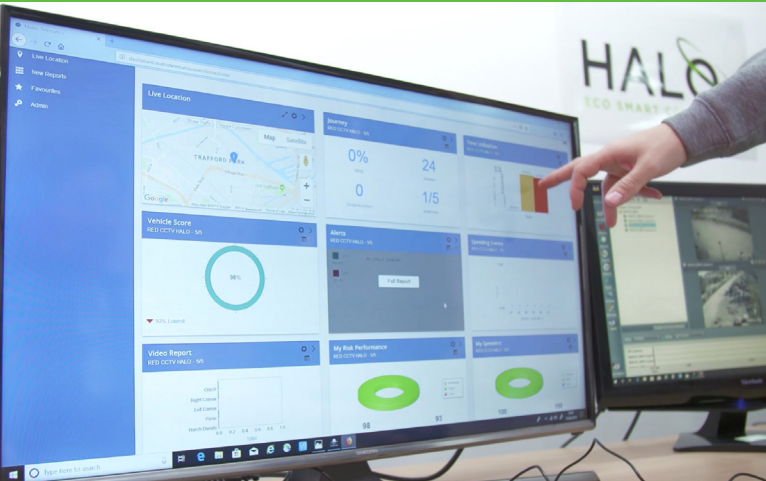


**SAVE
UP TO 500kg
PER WEEK**



**SAVE
FROM £150
PER WEEK**

HALO Online Portal



- Online portal provides total client transparency
- Allows access to cameras 24/7
- Alerts to any system malfunction by alarm via email to operator and engineer
- Allows RED CCTV engineers to remotely fix and maintain system saving visits and vehicle movements

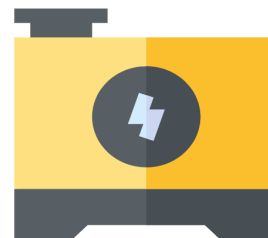
Crucial KPI Data: Fuel and CO2 Savings Reports

In August 2019
HALO CCTV
saved
65 Tonnes
of CO2
or 9285 Trees



Tower Fuel & CO2 Saving

Red CCTV - 21



24931.76 Litres Saved

Fuel Saved

£15208.38

CO2 Saved

64822.58Kg

Total Battery Time

150d 07:58:58

The HALO CCTV Modular Range



HALO Compact

Connects to wired system,
internal or external positioning



HALO Hybrid

Fuel cell saves 500kg of
CO2 per week



HALO Solo

Solar and wind turbine
power or both